



Welcome in your new space of freedom ...





Passionate for boats, Xavier Pillet built his first hull at 15 years. Pioneer in the design and the building process of fun boards (hyper-planning hulls), Xavier Pillet perfected his knowledge in hydrodynamics. He worked over 10 years on the design and development of fins, where he acquired a reputation at the highest level.

In the same time he develops his skills in CFD and advanced composite, and creates a new brand UFO-Composites specialized in the development and realization of complex carbon parts for different fields like high level sports, aviation industry, shipbuilding, or R&D.

Diversifying his activities, Xavier creates UFO Boat, a new division, with a first model, the U6 9 a 23 feet Carbon RIB, with an innovative hull optimizing the glide and the transition into the sea issued from his experience.

The U119 concept has naturally found its way, and this vanguard man created easily a strong synergy to develop and lead this new project. The innovation is the basement of this new stage, many ideas have to be developed, and the new coming of Gregory Pelard, naval architect, create an emulation between those two personalities, sharing ideas and experiences.

After many hours of research in design and conception, the U119 has been created. With her exceptional lines combined with the MPMC® technology (MultiPly Multiaxial Carbon) and other innovations, the U119 is mainly characterised by a strong personality and a Mediterranean lifestyle.

Rich of this cooperation, Xavier and Gregory are already working on a new innovating project, the U219...

Another actor, Nicola Borella Art design, architectural interior enriched the team with his skills, and took care of the facilities...



DESIGN



UFO's design philosophy is very ambitious in every respect. Every single line is reviewed time and again until the resulting whole is a absolutely unique creation. Unique, because it radiates the timeless beauty of a UFO.



PERFORMANCE



She has INNOVATION in her blood, and you can feel this out on all the conditions. Like virtually no other boat the UFO U119 gives you the sensation of perfect control over all conditions of weather. And she does this with such directness and intensity that you will feel completely at one with the technology and the safety.



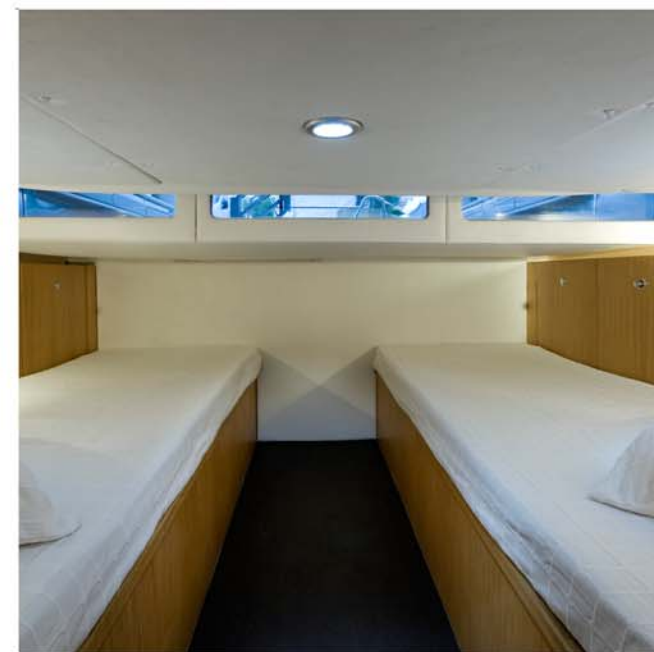
STYLE AND INDIVIDUALITY



Experience the fascinating colours and exclusive woods and leathers in the interior. For the exterior, choose from the range of attractive UFO exclusive customised paint finishes. Or tell us the shade you'd like.



LUXURY REDEFINED



There is no conflict between sportiness and common sense in the case of the U119: the luxury boat brings together stepped hull, the light but sturdy UFO MPMC carbon structure and comfortable space in a single boat. On top of this, there are numerous high-torque, powerful propulsion systems to choose from. The U119's design and technology redefine the benchmark in every respect.





Dimensions :

Lenght overall	13.38 m
Beam max	4.29 m
Lenght of the waterline	11.85 m
Draft	0.71 m

Displacement	7080 kg
--------------	---------

Category of navigation	CE/2003/44B*
------------------------	--------------

Concept	Xavier Pillet
Architect	Grégory Pelard
Interior	Borella Art Design

Passagers Max	12*
Beds	4

Hull	V profond à steps
Engines	Inboards with sterndrives 2 x 350 cv
	Inboards with surface drive system up to 2 x 600 cv

Fuel Capacity	1 000 l
Water capacity	350 l

Genset	Mase 6 kW
Air Conditioning System	Webasto Blue Cool Classic 9000 Btu

* en cours de certification



U119 Carbon

FEATURES

- Oversized cabins windows create a bright and airy feeling in the cabin
- Wide side decks promote safety when walking to the foredeck seating area
- Integral swim platform with integrated ladder
- Entertainment center with wet bar and storage
- Trademark UFO Sliding Davit
- Trademark UFO Tumblehome Aft
- Trademark UFO MPMC® sandwich system
- inboard engines with performance surface drive system

SPECIFICATIONS

- Overall Length: 13.38 m.
- Beam: 4.29 m.
- Dry Weight: 7080 kg.
- Fuel Capacity: 1000 ltr.
- Deadrise: 29 deg.
- Draft: 71 cm.
- Water Capacity: 300 ltr.
- Gray Water Capacity: 132 ltr.

PERFORMANCE DATA

- Engine mounted: Twin FPT N67 (560 hp, 412 kW)
- Top Speed: over 48 knots @ 3000 rpm
- Cruise Speed: 36 knots @ 2300 rpm

HULL & DECK

- Advanced carbon composite hull (MPMC®)
- Anchor chain/rope storage with access hatch and stainless steel sliding system
- Anti-fouling bottom paint
- Fiberglass hardtop with canvas enclosure and aft cover
- Forward deck sunpad
- Integral swim platform with integrated stainless steel swim ladder
- Teak deck
- Mooring cleats – retractable stainless steel
- Navigation lights LED
- Stainless steel hand rails
- Stainless steel anchor sliding davit
- Stainless steel windshield frame with tempered glass
- Tumblehome aft
- Map coat
- Foredeck sunpad
- Tempered glass deck and hull windows

COCKPIT

- Adjustable cockpit seating
- Courtesy lighting
- Entertainment center
- electric actuator for cockpit floor for complete engine room access
- Self-bailing cockpit
- Accessory outlet 220v
- Hot/cold fresh water shower, mounted aft

GALLEY

- Accessory outlets 220v
- electric stove
- Tableware storage
- Lighting, 12v
- Fridge, freezer
- Stainless steel sink with removable tap
- Microwave/grill oven

CABIN

- Accessory outlet, 220v
- Air conditioner/heater
- Bose V20 Lifestyle sound system, Sony Blu-Ray player with Samsung LED 32" LED TV
- Built-in storage compartments
- Full size bed with sheets and coordinated spread and pillows
- Lighting, 12v direct (reading lights) and overhead LED
- Cabin entrance door

TOILET COMPARTMENT

- Custom teak grate for shower
- Shower with adjustable shower wand
- Stainless steel surface counter with glass sink and above counter storage
- Mirror
- Towel bars/robe hook
- Ventilation fans
- TECMA head system

AFT STATEROOM

- Direct lighting, 12v (reading lights) and overhead
- Twin beds with sheets and coordinated comforter, pillow shams & bed pillows
- Inbuild storage and hanging locker
- 220v outlets

HELM STATION

- Cockpit LED lighting
- Compass
- Custom carbon yacht helm seat
- Full engine instrumentation with UFO custom gauges
- hydraulic steering
- Alluminium alloy steering wheel

TECHNICAL

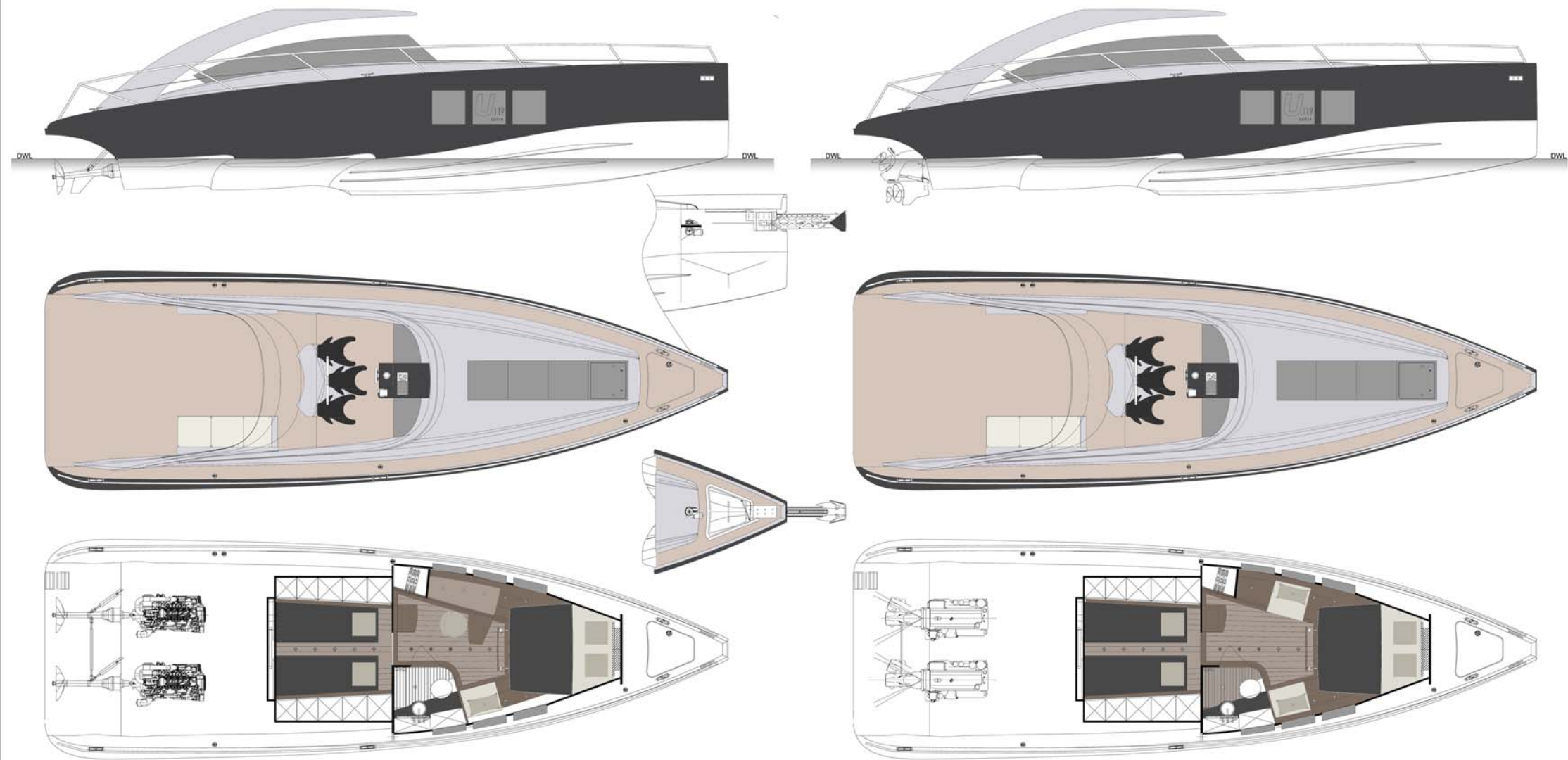
- Converter/battery charger: 40 amp
- Air conditioning/heating: Cabin – 9,000 btu air/heat unit (230v/50Hz)
- Inbuild FRP fuel tanks with electric sending units
- Automatic bilge pumps with indicator lights
- High water bilge pump with alarm
- Batteries and trays with selector panel for all 12v DC functions
- Single 50 amp 240v/60Hz dockside power with 10m cord
- Electric bilge blowers
- Emergency washout spigot in bilge
- Galvanic isolator
- Generator - Mase diesel (6kW 60Hz)
- Machinery space fire suppression with manual and automatic activation
- Main distribution panel 12v/240v with circuit breakers
- Pressure water system and water
- Racor fuel filters
- Shower sump pump with automatic switches
- Gray water system
- Spare circuits for additional owner installed electronics

ACCESSORIES

- Bow thruster
- Aft cockpit table – Acrylic with adjustable aluminium feet
- Dish, silverware & towel package
- Designed leather seats
- Garmin Electronics Package
- Garmin Autopilot/Radar Package
- CE Certification

** UFO reserves the right to change this information at any time without notice. **







AMUboats

exclusief importeur van UFO boten voor
Nederland, Belgie, Luxemburg

mob: +31 (0) 621 20 40 80

tel: +31 (0) 174 24 33 26

www.amuboats.nl
info@amuboats.nl

Parelduiker 11 - 2681 VJ Monster - NL